

BioRefinery Plant 200 TPD

(Item PK-2610)



Bio Oil Refining & Pretreatment Plant 200 TPD (18 MGY) - OR - Biodiesel Plant

For sale as a complete Asset Sale including equipment, land, buildings.

The plant (originally a stainless steel biodiesel plant), has added capability to clean up vegetable oil by refining for the renewable diesel industry, and by using enzymatic hydrolysis to create fatty acids. Most of process is stainless steel.

In Operation Currently Overview***

- This plant started acid esterification and transesterification biodiesel production in 2006 demonstrating capacity of approximately 14MM GPY on multi feedstocks, chosen based on economics of each at the time. Feedstocks included UCO, poultry, animal fats, soy and corn oils. Purchased specs were 15 % FFA , 2 % MIU, 1 % Moisture MAX. Finished biodiesel product met or exceeded ASTM D6751

- In 2022 the facility switched to enzymatic hydrolysis of soybean oil for the production of Fatty Acids operating at 10 gpm, and later to pretreatment of feedstock up to 18MM GPY. Soybean oil was purchased as a crude degummed specification and produced as produce Fatty Acid and pretreat feedstocks for use in Renewable Diesel



Facts At A Glance

Capacity	Biodiesel 14 MGY Refining 200 TPD (18 MGY) Hydrolysis Fatty Acids 10 gpm
Age	Built 1991 Reconditioned 2006 Still in Operation
Rail	Norfolk & Southern main line
Land	5 acres fenced plan proper 26 acres total for expansion
Sale Type	Asset Sale, land & buildings
Tank Farm	240,000 gallons
Information & Links:	
<ul style="list-style-type: none">• VDR (virtual data room) available on request• Virtual Tour Link• Website Information and Photos	

BioRefinery Plant 200 TPD

(Item PK-2610)



Partial Equipment List

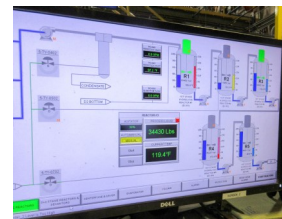
- (5) 7000 gallon ss reactors
- (2) 2500 gallon ss reactors
- Alfa laval B214 Centrifuge
- Evaporative dryers
- Methanol Distillation rectifier column
- Reboiler
- Glycerin evap column
- 130,000 gallons tank storage inbound
- 110,000 gallons tank storage outbound
- (2) Chillers
- 600HP Firetube steam boiler
- 250HP Firetube steam boiler
- Truck Scale
- Truck & rail Loadout system
- Plate and frame filter
- Silica and DE mixing & slurry systems
- Horizontal pressure leaf filter
- Wastewater treatment
- Full Lab Equipment
- Siemens MCC
- Allen Bradley plc & HMI
- Fully Automatic
- R&D Equipment—Westfalia centrifuge, tanks for semi-works

Rail: 4 spots + 3 outside

Truck: 4 spots

Feedstock:

crude degummed soybean oil
super degummed canola oil
animal fats
used cooking oil



Terms: All equipment is sold As Is Where Is, Subject to prior sale and availability. All quotes are in US Dollars unless specifically noted otherwise. Description of the equipment - especially those relating to capacity, size, or condition - are stated as clearly as possible for information to the buyer or observer. The descriptions and representations cannot be taken as accurate. The buyer has the sole responsibility to determine size, capacity, capability, suitability, condition, or any other attribute pertaining to the piece of equipment represented or purchased. The assets are sold "As Is", "Where Is" and "with all faults" and except as explicitly stated in the Contract for Purchase. All warranties, including, without limitation, the warranties of merchantability, quality, and fitness for a particular purpose are hereby expressly excluded. Seller makes no representations or warranties as to design, condition, capacity, performance, or any other aspect of the asset.